

# EMSL Analytical, Inc.

1101 Aviation Parkway, Suite A, Morrisville, NC 27560 Tel: 919-465-3900 Fax: 919-465-3950



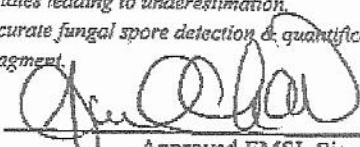
Client: Inspector Paul  
 P.O. Box 236  
 Fort Mill, SC 29716  
 Attn: Paul King  
 Project: (

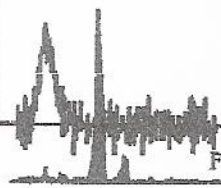
EMSL Order ID:  
 Date Received:  
 Date Analyzed:  
 Date Reported:

## Air-O-Cell™ Cassette Analysis of Fungal Spores & Other Airborne Particulates by Optical Microscopy (EMSL Method M001)

Lab Sample Number	1	2	3	4	5	6	7	8
Client Sample ID	7002587	7002583	7002565	7000741	7002570	7002572	7000732	7000722
Sample Location	Kitchen	Dining Rm	Den	Upstairs Addition	Master BR	Upstairs Hall	Attic	Crawl Front
Sample Volume (liters)	150	150	150	150	150	150	150	150
Spore Types	Count/m3	Count/m3	Count/m3	Count/m3	Count/m3	Count/m3	Count/m3	Count/m3
Agroclybe/Coprinus	232	148	42	148	127	84	169	127
Alternaria	-	-	-	-	42	-	-	-
Arthrospores	-	-	-	-	-	-	-	-
Ascospores	443	696	654	232	63	274	-	464
Aspergillus/Penicillium	4870	16500	3800	11600	3520	1030	401	1240
Arthrinium	-	-	-	-	-	-	-	-
Basidiospores	-	-	-	42	-	-	-	-
Bipolaris	-	-	-	-	-	-	-	-
Chaetomium	-	-	-	-	-	84	-	-
Cladosporium	338	506	190	84	717	105	211	84
Curvularia	-	-	-	21	-	-	-	42
Epicoccum	21	-	-	63	-	-	-	105
Fusarium	-	-	-	-	-	-	-	-
Ganoderma	-	42	-	-	-	-	-	-
Myxomycete	148	127	127	42	-	42	169	211
Paecilomyces	-	-	-	-	-	-	-	-
Pithomyces/Ulocladium	-	-	-	-	-	-	-	-
Scopulariopsis	-	-	84	-	-	-	-	-
Stachybotrys	-	-	-	-	-	-	-	-
Rust	-	-	-	-	-	-	-	-
Torula	-	-	-	-	-	-	-	-
Zygosporae	-	-	-	-	-	-	-	-
Unidentifiable Spores	127	-	21	-	-	-	21	-
<b>Total</b>	<b>6180</b>	<b>18000</b>	<b>4920</b>	<b>12200</b>	<b>4470</b>	<b>1620</b>	<b>971</b>	<b>2340</b>
Hyphal Fragment	84	-	42	127	21	-	21	42
Pollen	-	63	-	42	-	-	42	-
Fibrous Particulate	401	295	422	823	338	190	148	380
Insect Fragment	-	-	21	-	84	42	21	21
Analytical Sensitivity	21	21	21	21	21	21	21	21
Skin Fragments (1-4)=	3	2	2	2	2	1	1	1
Background (1-5)=	4	3	3	4	4	3	3	3

High levels of background particulate can obscure mold spores and other airborne particulates leading to underestimation.  
 Background levels of 5 indicate an overloading of background particulates, prohibiting accurate fungal spore detection & quantification.  
 The detection limit is equal to one fungal spore, structure, pollen, fiber particle or insect fragment.  
 Present= Spores found during an additional scan at lower magnification.  
 No discernable field blank was submitted with this group of samples.

  
 Approved EMSL Signatory  
 Alan Goldstein, Ph.D., Lab Manager



# EMSL Analytical, Inc.

1101 Aviation Parkway, Suite A, Morrisville, NC 27560 Tel: 919-465-3900 Fax: 919-465-3950



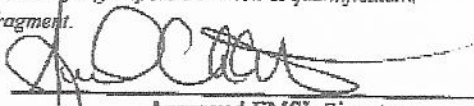
Client: Inspector Paul  
 P.O. Box 236  
 Fort Mill, SC 29716  
 Attn: Paul King  
 Project:

EMSL Order ID:  
 Date Received:  
 Date Analyzed:  
 Date Reported:

## Air-O-Cell™ Cassette Analysis of Fungal Spores & Other Airborne Particulates by Optical Microscopy (EMSL Method M001)

Lab Sample Number	9	10	-	-	-	-	-	-
Client Sample ID	7002691	7002698	-	-	-	-	-	-
Sample Location	Crawl Rear	Exterior	-	-	-	-	-	-
Sample Volume (liters)	150	150	-	-	-	-	-	-
<b>Spore Types</b>	<b>Count/m3</b>	<b>Count/m3</b>	-	-	-	-	-	-
Agrocybe/Coprinus	148	338	-	-	-	-	-	-
Alternaria	-	-	-	-	-	-	-	-
Arthrospores	-	-	-	-	-	-	-	-
Ascospores	464	760	-	-	-	-	-	-
Aspergillus/Penicillium	1580	-	-	-	-	-	-	-
Arthrinium	127	42	-	-	-	-	-	-
Basidiospores	42	127	-	-	-	-	-	-
Bipolaris	-	-	-	-	-	-	-	-
Chaetomium	-	-	-	-	-	-	-	-
Cladosporium	359	506	-	-	-	-	-	-
Curvularia	-	-	-	-	-	-	-	-
Epicoccum	-	-	-	-	-	-	-	-
Fusarium	-	-	-	-	-	-	-	-
Ganoderma	21	-	-	-	-	-	-	-
Myxomycete	42	148	-	-	-	-	-	-
Paecilomyces	-	-	-	-	-	-	-	-
Pithomyces/Ulocladium	-	-	-	-	-	-	-	-
Scopulariopsis	-	63	-	-	-	-	-	-
Stachybotrys	-	-	-	-	-	-	-	-
Rust	-	-	-	-	-	-	-	-
Torula	-	-	-	-	-	-	-	-
Zygosporae	-	-	-	-	-	-	-	-
Unidentifiable Spores	42	-	-	-	-	-	-	-
<b>Total</b>	<b>2830</b>	<b>1980</b>	-	-	-	-	-	-
Hyphal Fragment	63	-	-	-	-	-	-	-
Pollen	-	-	-	-	-	-	-	-
Fibrous Particulate	190	63	-	-	-	-	-	-
Insect Fragment	-	-	-	-	-	-	-	-
Analytical Sensitivity	21	21	-	-	-	-	-	-
Skin Fragments (1-4)=	2	1	-	-	-	-	-	-
Background (1-5) =	4	1	-	-	-	-	-	-

High levels of background particulate can obscure mold spores and other airborne particulates leading to underestimation.  
 Background levels of 5 indicate an overloading of background particulates, prohibiting accurate fungal spore detection & quantification.  
 The detection limit is equal to one fungal spore, structure, pollen, fiber particle or insect fragment.  
 Present = Spores found during an additional scan at lower magnification.  
 No discernable field blank was submitted with this group of samples.

  
 Approved EMSL Signatory  
 Alan Goldstein, Ph.D., Lab Manager

